



# LICENSURE UPDATE

Victoria Chamberlain, Executive Director



## Did You Know?

That if your license expires, you are not able to work or receive contract pay. Many people think that they can work but not as a teacher or administrator "of record." The Oregon Statutes say you may not be paid with public funds if you have an expired license. It's important to get your application and fee in **BEFORE** your license expires.

You or your administrator may be subject to sanctions. This is also why the Commission is now asking for a letter or explanation with each late application.



## TEST CHANGES

Beginning September 1, 2010, most Praxis tests will no longer be offered or accepted for TSPC licensees wishing to add endorsements, unless the test was taken prior to 9/1/2010. Check the article on the inside for more information.

## COMMUNICATION TO THE FIELD



### Extended Hours Pilot

TSPC just completed a pilot to have extended hours and to be open half days on Saturday. Commission staff is committed to improving service to licensees and this is one way to increase access for customer service.



On a typical day, TSPC receives the majority of calls between 2:30 and 4 PM, when teachers are able to make calls as class is over. Our change to keep phones active until 6 PM would allow more flexibility in calling and increase the chances of getting through to a representative that is not already on the phone. We are assessing how the pilot did and will look at opening at least two Saturdays a month this summer. The extended hours of 7 AM to 6 PM will remain permanent hours for the agency.

### Emergency Licenses

There is a lot of confusion about the Emergency License and its purpose. The Emergency license is a district option to use when they are in a situation which requires immediate action. TSPC does not give them out without a district requesting them. In addition to the request, there must be a letter written from the district giving the compelling reason for the emergency. Additionally, the Director grants as little time as possible which makes this choice an expensive option.

We have administrators and teachers come in with their licenses expiring and they have not completed the requirements to renew. As they ask what can we do, the Emergency License gets mentioned. The decision to grant an emergency license is not an automatic fix. In fact, many districts feel strongly that licensees not getting their requirements completed is not an emergency for the district, but rather for the employee.

Districts can take several actions: 1) they can put a substitute in place until the requirements are met; 2) they can reassign the teacher if there is something else they are qualified to teach and licensed to teach; or, 3) or they can deem the situation an emergency and deliberate with TSPC to see if one can be issued.

It's important to be aware of your license requirements for renewal so that you are not caught without a license as unexpected events (illness; test sessions full; scores of tests not received, etc.) occur and leave you in the lurch. Review the letter you received with your license to keep track of your next stage of renewal.

## The Initial II License

The Initial II license and the Continuing Teaching licenses are terminal licenses. In other words, once they are received, only CPD is required to renew them if you are employed .5 or more in an Oregon public school. You are not required to take graduate coursework to renew your license once you hold the Initial II license. It is a renewable 3 year license and It is issued after the following requirements are met:

- 1) Licensee completes 45 qtr. graduate hours **after** the issuance of the license. The 45 graduate hours must include 15 qtr. hours in pedagogy, 15 qtr. hours in content courses, and 15 qtr. hours in education courses. A content course is related to a subject area that is taught. A class called "behavior management" is not a content course. It could be pedagogy or education. Literature studies or World Geography would be a content course or could count for an education course. If you are a teacher, administrative courses would not be considered "content" courses as they are not a subject area. If you are taking administrative courses and want to count them towards your Initial II, you must complete a Masters degree and could not use the 15, 15, 15 option.
- 2) Completing a Masters degree after your license is issued. If you received your license based on your Bachelors degree, you can complete a Masters degree to move to the Initial II.
- 3) If you received your license as part of a Masters program (MAT) you must take nine hours **after** you receive the license. **These courses must be enrolled in after your license is issued in order for them to be accepted.**

Once you receive the Initial II license, you are not required by TSPC to take further coursework to renew. The CPD requirement is applicable with the Initial II license.

In the alternative, a teacher may strive to obtain the Continuing Teaching License, The Continuing Teaching License (CTL) is a 5 year renewable license. To obtain the CTL one must have the following:

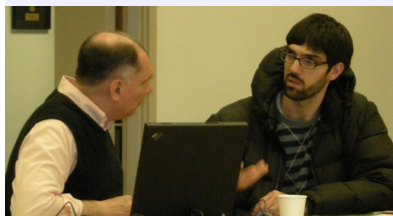
- 1) Master's degree or higher
- 2) Meet the conditions of the Initial I and Initial II license
- 2) Complete a commission approved program at an Oregon higher education institution, or
- 3) Complete national boards
- 4) Work 5 years 1/2 time or more

## Out of State Licensure Programs

If you are enrolled in an out of state licensure program it's important to know the process for getting licensed. Because those programs have not been vetted by our Commission, you must obtain licensure in the state in which the program resides. This means that if you take a program from Grand Canyon University, for example, then we must have an Arizona license presented to us for us to recognize the completion of your program.

In some cases, this means that you must take tests given only in the state or must meet other requirements required by the state. Be sure to check this out. This applies to online programs based in other states as well. Call us if you have any questions.

## TSPC on the Road in Albany



Mike Newton answers questions Lori Williams, from Greater Albany Public Schools Human Resources Office once again invited TSPC agents to come to the District Office and meet with licensed teachers and administrators with questions about their licenses. This April visit was a big hit last year so we packed up our computers and three of our staff members were available to meet with folks making an appointment through the HR office. We scheduled 33 appointments and were pleased to meet and answer questions about licensure.

If you would like to have TSPC visit your district, contact your HR staff. They can call and schedule a time for us to come and assist staff members with questions.

## TSPC Moves to NES Test in Effect September 1, 2010

Starting September 1, 2010, the Commission is adopting new licensure tests in nearly all content areas. The currently adopted PRAXIS tests will be available (and required) from now through August 31, 2010. After August 31, 2010, the new tests will be required.

If you currently hold a Restricted Transitional License, a Conditional Assignment Permit, or an OUT OF STATE Initial license, or are adding an endorsement OR if you have been advised by TSPC that you need to pass a content test in order to meet your licensure requirements, this announcement affects you.

The commission will honor all passing scores on the current commission-adopted PRAXIS tests if the passing score was obtained prior to September 1, 2010. If you are required to pass a series of tests (e.g.: Language Arts, physical education, etc.) and you have not passed ALL of the tests, you will be required to pass the new tests if you have not completed the series by September 1, 2010, Note: If you have not yet taken the test, the new commission tests have the following features:

- ⇒ One-time registration fee;
- ⇒ Instead of "paper and pencil" tests like we currently administer, most of the Commission's tests will be computerized;
- ⇒ Candidates may take their tests at a Vue center after registering for the test and receiving an appointment date and time to take the test;
- ⇒ Most candidates will receive a score for most tests before they leave the testing center;
- ⇒ Instead of two or more tests in some subject areas, nearly all tests will be reduced to one test;
- ⇒ Candidates who have constructed responses (a written portion) or a speech response portion (second languages) will not receive a score report on their test day;
- ⇒ Official Scores will be delivered to the candidates in less than two weeks.
- ⇒ The candidate may choose their testing time, instead of having to wait for a set Saturday once every other month.

What areas will not have computerized tests?

Our current ORELA tests:

- \* Multiples subjects (ECE, ELE, ML);
- \* ESOL (all levels);
- \* Civil Rights Test (mandatory for all newly licensed teachers.)
- \* Administrator

The following areas do not yet have tests developed by NES and will continue to use the Praxis until further notice:

- ⇒ Agriculture (10900) [Agriculture]
- ⇒ Chemistry, Physics & General Sciences (10070) [Chemistry/Physics]
- ⇒ Speech Language Pathology (20330) [Communications Disorders]
- ⇒ Special Education: Preschool/Early Childhood (10690) [Early Intervention/Early Childhood]
- ⇒ French Content Knowledge and Productive Language Skills (20173; 10171) [French]
- ⇒ German Content Knowledge and Productive Language Skills (20181; 30182) [German]
- ⇒ Education of the Deaf & Hard of Hearing Students (10271) [Hearing Impaired]
- ⇒ Marketing Education (10560) [Marketing]
- ⇒ Reading
- ⇒ School Psychologist (10400) [School Psychologist]
- ⇒ Speech Communication (10220) [Speech Communication]
- ⇒ Technology Education (10050) [Technology]
- ⇒ Teaching Students with Visual Impairments (10280) [Vision Impaired]

We're on the web at  
[www.oregon.gov/tspc](http://www.oregon.gov/tspc)

**Teacher Standards & Practices Commission**

465 Commercial St. NE  
 Salem, OR 97301-3414  
 Phone: 503-378-3586  
 Fax: 503-378-4448  
 Email: contact.tspc@state.or.us

**TSPC Commissioners**

- Mario Alba
- Bill Beck
- Francis Charbonnier
- Milt Dennison
- Charleen Hoiland
- Gary Humphries
- Shirley Madathil
- Gordon Munck
- Nancy Olson
- Melissa Sass
- Robert Sconce, Jr., Vice Ch.
- Sam Stern
- Jeff Matsumoto
- Nancy Watt
- Cassandra Wilson, Chair
- Michael Wood

**Licensure Staff**

- Victoria Chamberlain  
Executive Director
- Keith Menk  
Deputy Director
- Julie McCann  
Director of Licensure

**Public Service Reps**

- Stephanie Gross
- Amanda Hill
- Beth Jones
- Patty Liddell
- Jamila Miller
- Mike Newton

**License Evaluators**

- Linda Helton
- Maria Odle
- Heidi Reinhardt

***Quarter vs. Semester Credit Hours***



An academic term is a division of an academic year when schools hold classes. The divisions are called terms and each institution sets its own calendar.

A semester system divides the academic year into two terms + summer

A quarter system divides the academic year into 4 terms.

The standard conversion formula looks like this:

Quarter Hours \* .67 = semester hours

Semester Hours \* 1.5 = quarter hours.

So, 9 semester hours \* 1.5 = 13.5 quarter hours or

4.5 quarter hours \* .67 = 3 semester hours

***Licensure Staff***

*We thought it would be helpful for you to see the staff members who are responding to your questions at the office.*



***Mike***



***Beth***



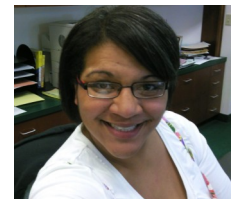
***Patty***



***Stephanie***



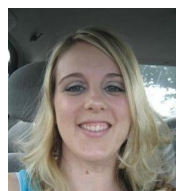
***Amanda***



***Jamila***



***Maria***



***Heidi***



***Linda***

***To establish, uphold and enforce professional standards of excellence and communicate those standards to the public and educators for the benefit of Oregon's students.***