



# LICENSURE UPDATE

Victoria Chamberlain, Executive Director

Julie McCann, Editor



## Did You Know?

We are working with a lot of people who have lost their Praxis, CBEST, and other test scores and the news is not good. If you never leave the state, you won't have a problem. But, if you do move to another state, you may have to show official proof of taking the tests. **Praxis only keeps records for 10 years and this has proven to be a problem for folks moving to Oregon who want to get licensed.** State rules call for "official" test score results. Plan ahead and set up a folder to keep these in a safe place. It's not fun to retake tests!

## COMMUNICATION TO THE FIELD

### Lynn Beaton—New Director of Licensure at TSPC

We are happy to welcome Lynn Beaton as the new Director of Licensure. Lynn will be full time and brings a great deal of experience to this position. She has served for the last year as the Legal Liaison for TSPC, working on the professional standards side of the agency. In that role, Lynn has had opportunities to see how the agency operates and familiarize herself with licensure issues as well. Julie will continue her part-time work with TSPC as the District Liaison and partner with licensure as she focuses on district support and training, website updates, liaison with state groups related to licensure and communication to the field. Welcome, Lynn!



\*\*\*\*\*



### Getting the Newsletter

I've been getting a lot of questions about how to get the newsletter sent to teacher personal accounts. At TSPC, we try not to overuse our email list as we want licensees to know what comes from TSPC is important information for their license. So, all newsletters are posted on our website ([http://www.tspc.oregon.gov/support/news\\_page.asp#Item\\_4](http://www.tspc.oregon.gov/support/news_page.asp#Item_4)) at the bottom of the page as well as sent to Oregon School Personnel Association, OEA, and COSA. Our

hope is this letter will help everyone stay informed about what is happening with licensure and also help explain the rules. Contact your district if you want to have them send it to you or You may receive it as a news release by signing up to receive notifications from TSPC on under "Online Services."

### What About HQ

We get a lot of questions about Highly Qualified status for teachers. I thought I would attempt to explain how this works and who oversees this requirement. First, TSPC does not regulate or monitor HQ status. In fact, there are many people who are legally and properly licensed that are not HQ. Monitoring responsibility resides with ODE and your district. The person at ODE who monitors HQ is Bev Pratt, who is very knowledgeable about the requirements and NCLB rules. She is the "go to" person at ODE on this issue. In the beginning of the NCLB law changes, TSPC assisted in evaluating HQ to support districts. We do not do so now unless someone wants to hire us to do this for \$50 as we have a small staff and much to do around licensure.

Second, any teacher who has received an HQ letter from TSPC, remains HQ for those subjects forever. It is not something you need to check back on regularly. You can find your letters any time under the Licensure Inquiry tab on our website. Finally, districts *are able* to do a HOUSSE evaluation which uses a formula to determine if a teacher is HQ. However, keep in mind that HOUSSE was intended for veteran teachers in 2002. There is no legal reason a district should be using HQ at this point in time since all Oregon teachers who were employed in 2002 to 2005 should have been evaluated by now. There is a slim possibility that a veteran teacher coming back to the profession is eligible for this option, but it is not intended ever for 'new teachers. Also, there is no such thing as a "HOUSSE LICENSE" or "HOUSSE ENDORSEMENT." HOUSSE stands for 'High Objective Uniform State Standard of Evaluation. It represents the *formula* that may be used with *veteran teachers only* to determine if they are highly qualified. This is not the same as a license. HQ is a determination of preparation required by NCLB. You can't HOUSSE someone into a license or endorsement. Only TSPC can issue licenses and endorsements after an evaluation. TSPC's publication on this issue is still valid and on point. Go to: <http://www.tspc.state.or.us/pub.asp?id=41> for more information. Questions? Call me.

## Furlough Days



Just a reminder that TSPC will be closed due to state budget reductions on the following days:

August 20  
September 17

Plan ahead so you don't get caught in the lurch. We will be opening 2 Saturdays from 8-12 in August and September to help assist educators.

## Changes in Licensure Requirement for the Civil Rights Exam **DELAYED**

A vote by the commission on Friday, August 6, 2010 delayed implementation of the Civil Rights in the Education Environment test requirement for licensure. This means that we are suspending implementation of the Civil Rights tests prior to licensure until we can get the test “on demand.” The commission authorized our Executive Director to issue emergency licenses until the test score may be obtained.



### Expedited Licenses

Expedited licenses will *not* be issued unless there is a true emergency for the license. Our evaluators are getting numerous expedite requests and school is a long way from opening.

Expedited licenses are not for people who are in a grace period, people who will likely have their licenses prior to school starting, or people who just want to get their licenses ahead of time.

Applications that are expedited that do not demonstrate a true district emergency will have the fee refunded and remain in line for issuance. Please help us keep from getting the licensure process backed up with all the expedites.

Thank you!

### TSPC Visits to Districts

Are you interested in having a TSPC representative visit your district to work with licensed teachers or administrators on using the website, understanding licensure, or other related issues? If so, give Julie McCann a call at 503 373 1060 to set up a visit.



Julie can also come and work with the HR staff on how to use the licensure handbook online and set up TSPC accounts.

Districts who have had these visits have felt they were very helpful. Let us know if you want us to come visit!

### Reminders

- ⇒ The *Recent Education* (Recency) requirement for persons who were unemployed or attempting to reinstate a license has gone away and it is now **not** necessary for folks to substitute 180 days or take college credit to renew their licenses. Do not confuse “recency” with other renewal requirements such as CPD or next stage license requirements such as graduate credit or completing a program. These are still required.
- ⇒ In order for a district to expedite a license, they must access the TSPC online services and use their account to fill out the request. If your district has not created an account, be sure to do so.
- ⇒ An application and fee assures that your grace period will activate for Basic, Standard, Initial, Initial I, Initial II, and Continuing licenses.

### Tracking TSPC Changes

Did you know that you can sign up for an account on our website and receive press releases and notice of changes in licensure? It’s a great way to be informed of changes that may affect your license.



You also get notice of the newsletters when they are ready and posted on the web.

Use the following link to sign up for a General Account. [http://www.tspc.state.or.us/account\\_setup\\_form.asp](http://www.tspc.state.or.us/account_setup_form.asp) You can choose what you want to know about and your account will be established.

We hope you take advantage of this resource to keep you informed of legislative and rule changes that may affect you.

## TSPC Moves to NES Test in Effect September 1, 2010

***We are rerunning this article because of the upcoming date for implementation.***

Starting September 1, 2010, the Commission is adopting new licensure tests in nearly all content areas. The currently-adopted PRAXIS tests will be available (and required) from now through August 31, 2010. After August 31, 2010, the new tests will be required.

If you currently hold a Restricted Transitional License, a Conditional Assignment Permit, or an OUT OF STATE Initial license, or are adding an endorsement OR if you have been advised by TSPC that you need to pass a content test in order to meet your licensure requirements, this announcement affects you.

The commission will honor all passing scores on the current commission-adopted PRAXIS tests if the passing score was obtained prior to September 1, 2010. If you are required to pass a series of tests (e.g.: Language Arts, physical education, etc.) and you have not passed ALL of the tests, you will be required to pass the new tests if you have not completed the series by September 1, 2010. Note: If you have not yet taken the test, the new commission tests have the following features:

- ⇒ One-time registration fee;
- ⇒ Instead of "paper and pencil" tests like we currently administer, most of the Commission's tests will be computerized;
- ⇒ Candidates may take their tests at a Vue center after registering for the test and receiving an appointment date and time to take the test;
- ⇒ Most candidates will receive a score for most tests before they leave the testing center;
- ⇒ Instead of two or more tests in some subject areas, nearly all tests will be reduced to one test;
- ⇒ Candidates who have constructed responses (a written portion) or a speech response portion (second languages) will not receive a score report on their test day;
- ⇒ Official Scores will be delivered to the candidates in less than two weeks.
- ⇒ The candidate may choose their testing time, instead of having to wait for a set Saturday once every other month.

What areas will not have computerized tests?

Our current ORELA tests:

- Multiplés subjects (ECE, ELE, ML);
- \* ESOL (all levels);
- \* Civil Rights Test (mandatory for all newly licensed teachers.)
- ⇒ Administrator

\* The following areas do not yet have tests developed by NES and will continue to use the Praxis until further notice:

- ⇒ Agriculture (10900) [Agriculture]
- ⇒ Chemistry, Physics & General Sciences (10070) [Chemistry/Physics]
- ⇒ Speech Language Pathology (20330) [Communications Disorders]
- ⇒ Special Education: Preschool/Early Childhood (10690) [Early Intervention/Early Childhood]
- ⇒ French Content Knowledge and Productive Language Skills (20173; 10171) [French]
- ⇒ German Content Knowledge and Productive Language Skills (20181; 30182) [German]
- ⇒ Education of the Deaf & Hard of Hearing Students (10271) [Hearing Impaired]
- ⇒ Marketing Education (10560) [Marketing]
- ⇒ Reading
- ⇒ School Psychologist (10400) [School Psychologist]
- ⇒ Speech Communication (10220) [Speech Communication]
- ⇒ Technology Education (10050) [Technology]
- ⇒ Teaching Students with Visual Impairments (10280) [Vision Impaired]

## Teacher Standards & Practices Commission

465 Commercial St. NE  
Salem, OR 97301-3414  
Phone: 503-378-3586  
Fax: 503-378-4448  
Email: contact.tspc@state.or.us

### TSPC Commissioners

Mario Alba  
Bill Beck  
Linda Brown  
Milt Dennison  
Thomas Greene  
Charleen Hoiland  
Gary Humphries  
Jeff Matsumoto  
Shirley Madathil  
Gordon Munck  
Nancy Olson  
Melissa Sass  
Robert Sconce, Jr., Vice Ch.  
Sam Stern  
Nancy Watt  
Cassandra Wilson, Chair  
Michael Wood

### Licensure Staff

Victoria Chamberlain  
Executive Director  
Keith Menk  
Deputy Director  
Lynn Beaton  
Director of Licensure  
Julie McCann  
District Liaison

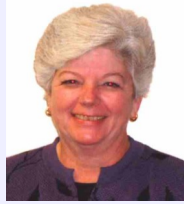
### Public Service Reps

Stephanie Gross  
Amanda Hill  
Beth Jones  
Patty Liddell  
Jamila Miller  
Mike Newton

### License Evaluators

Linda Helton  
Maria Odle  
Heidi Reinhardt

## Meet Commissioner Nancy Watt



Nancy Watt joined the Commission on March 1, 2010. Here are some comments about her background and interest in education:

As with every educator, I want Oregon's children to have the best teachers possible. As a commissioner, I have an opportunity and a responsibility to affect the quality and preparation of teachers.

I have a BA in English from Willamette University and an M. Ed. from Western Oregon University. I have worked in a variety of Oregon public schools as an English teacher, a middle school and high school librarian, and as a secondary administrator.

I am married to a retired school administrator. We like to take golfing vacation where he golfs with skill and I with enthusiasm. I'm an avid reader. As a school librarian I read constantly and still consume 2-4 books each week. I also do hand quilting and generally complete about 1 quilt per year.

## Licensure Staff

*We thought it would be helpful for you to see the staff members who are responding to your questions at the office.*



*Lynn Beaton*



*Mike*



*Beth*



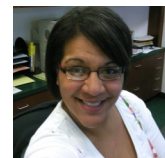
*Patty*



*Stephanie*



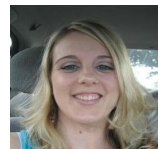
*Amanda*



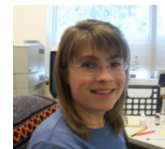
*Jamila*



*Maria*



*Heidi*



*Linda*

*To establish, uphold and enforce professional standards of excellence and communicate those standards to the public and educators for the benefit of Oregon's students.*